



DIRECT FENCING SUPPLY

COLLECTION

**DISTRIBUTOR FOR
NATIONWIDE INDUSTRIES**



COLOUR LOCK™

INNOVATIVE PRODUCTS FOR THE FENCE INDUSTRY



DIRECT FENCING SUPPLY

COLOUR LOCK™



4 year old tan Jasper Fence



COLOUR LOCK™

What is Colour Lock™?

- Colour Lock™ is a DFS exclusive formula that provides your fence the best fade protection available. Using the highest grade of acrylic formula and additives the bar has been set higher than ever before in fade protection. DFS does not offer the industry standard "PVC colour" in any profile.
- Colour Lock™ technology protects the colour and sheen of your PVC fence for much longer than the industry standard (PVC colour). There is no better protection currently available and DFS backs our products with a great warranty. DFS is a Canadian company that understands the importance of withstanding the harsh elements and temperature swings. Many claim to make a quality PVC coloured product, but you should demand the best. Make the right choice and purchase a Colour Lock™ fence and not just a standard PVC colour. You want your customers fence to look great for years to come and not fall victim to premature fading and chalking, or an inevitable "call back" or warranty claim.

DFS is the leader for innovation in PVC Fencing across Canada. We take great pride in offering our customers the best in colour fade protection.

Quality is our culture, let us prove it to you!



1

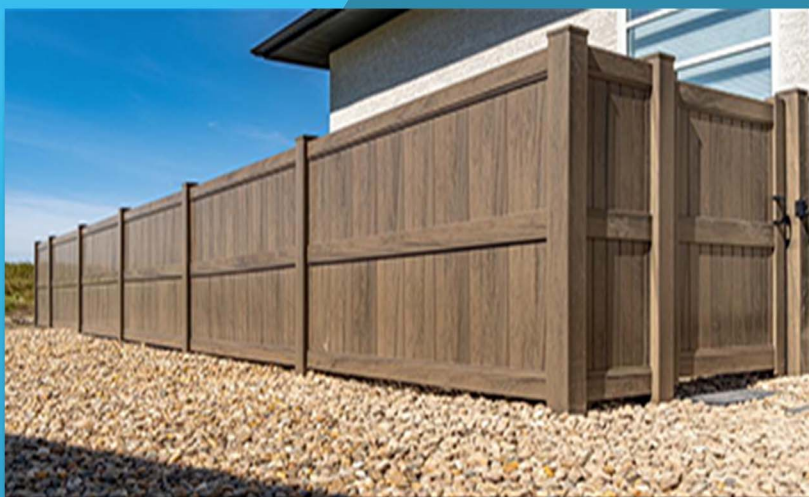
directfencingsupply.ca



PRIVACY FENCE

BOREAL SERIES

Height: 3'-6'
Width 8'
Post: 5"x5"
Top Rail: 2"x 6" with Aluminum Insert
Middle Rail: 2"x6" with insert
Bottom rail: 2"x6" with HD insert
Tongue & Groove: 7/8"x11.3"
U Channel: 1 3/8" Deep x 1" Wide
Matching Gate: Available
Colour: Dark Maple
Contact your sales rep for more details.



JASPER

Height: 3'- 8'
Width: 6' or 8'
Post: 5" x 5"
Top Rail: 2" x 6"
Bottom Rail: 2" x 6", with insert
Tongue & Groove: 7/8" x 11.3"
U Channel: 1 3/8" Deep x 1" Wide
Matching Gate: Available
6FT Sections available in White Jasper only
Contact your sales rep for more details



DFS COLOUR OPTIONS:

AVAILABLE IN SELECT STYLES



White



Tan



Grey



Adobe



Dark
Maple



DIRECT FENCING SUPPLY



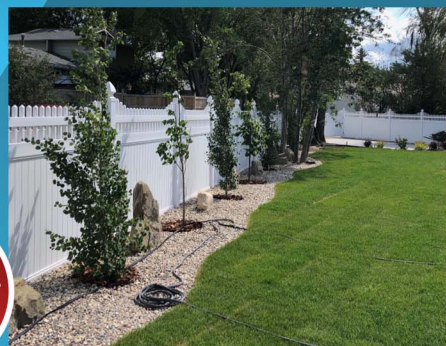
NIAGARA

Height: 3'- 8"
Width: 8'
Post: 5" x 5"
Top Rail: 1.5" x 3.5"
Middle Rail: 1.5" x 5.5"
Bottom Rail: 2" x 6", with insert
Lattice Panel: 11.75" x 91"
Tongue & Groove: 7/8" x 11.3"
U Channel: 1 3/8" Deep x 1" Wide
Matching Gate: Available
COLOUR available in select profiles only.
Contact your sales rep for more details .



FAIRMONT

Height: 3'- 8"
Width: 8'
Post: 5" x 5"
Top Rail: 2" x 3.5"
Middle Rail: 2" x 6"
Bottom Rail: 2" x 6", with insert
Picket: 1.5" x 1.5", 22 pcs
Tongue & Groove: 7/8" x 11.3"
U Channel: 1 3/8" Deep x 1" Wide
Matching Gate: Available
COLOUR available in select profiles only.
Contact your sales rep for more details .



HADFIELD

Height: 3'- 8"
Width: 8'
Post: 5" x 5"
Top Rail: 2" x 3.5"
Middle Rail: 2" x 6"
Bottom Rail: 2" x 6", with insert
Picket: 1.5" x 1.5", 22 pcs
Tongue & Groove: 7/8" x 11.3"
U Channel: 1 3/8" Deep x 1" Wide
Matching Gate: Available
COLOUR available in select profiles only.
Contact your sales rep for more details .



CYPRESS

Height: 3'- 8"
Width: 8'
Post: 5" x 5"
Top Rail: 1.5" x 3.5"
Middle Rail: 1.5" x 5.5"
Bottom Rail: 2" x 6", with insert
Lattice Panel: 11.75" x 91"
Tongue & Groove: 7/8" x 11.3"
U Channel: 1 3/8" Deep x 1" Wide
Matching Gate: Available
COLOUR available in select profiles only.
Contact your sales rep for more details .



FERNIE

Height: 3'- 8"
Width: 8'
Post: 5" x 5"
Top Rail: 2" x 6"
Middle Rail: 2" x 3.5"
Bottom Rail: 2" x 6", with insert
Lattice Panel: 11.75" x 91"
Tongue & Groove: 7/8" x 11.3"
U Channel: 1 3/8" Deep x 1" Wide
Matching Gate: Available
COLOUR available in select profiles only.
Contact your sales rep for more details .



SEMI-PRIVACY FENCE



HURON

Height: 3'- 6"
Width: 8"
Post: 5" x 5"
Top Rail: 2" x 6"
Middle Rail: 2" x 3.5"
Bottom Rail: 2" x 6", with insert
Picket: 6" x 7/8"
Matching Gate: Available
COLOUR available in select profiles only.
Contact your sales rep for more details

CUSTOM HEIGHT OPTIONS AVAILABLE ON REQUEST,
CONTACT YOUR SALES REP FOR MORE DETAILS



PICKET FENCE



CLOVERDALE

Height: 3'- 6'
Width: 8'
Post: 5" x 5"
Top Rail: 2" x 3.5"
Bottom Rail: 2" x 3.5" , with insert
Picket: 7/8" x 3", 15 pcs
Picket caps: Spade cap
Matching Gate: Available
COLOUR available in select profiles only.
Contact your sales rep for more details



CLOVERDALE II

Height: 3'- 6'
Width: 8'
Post: 5" x 5"
Top Rail: 2" x 3.5"
Bottom Rail: 2" x 3.5" , with insert
Picket: 7/8" x 3" , 15 pcs
Picket caps: Spade cap
Matching Gate: Available
COLOUR available in select profiles only.
Contact your sales rep for more details



EVERGREEN

Height: 3'- 6'
Width: 8'
Post: 5" x 5"
Top Rail: 2" x 3.5"
Bottom Rail: 2" x 6" , with insert
Picket: 7/8 x 3 pickets x 15 pcs
Picket caps: Dog Ear Cap
Matching Gate: Available
COLOUR available in select profiles only.
Contact your sales rep for more details



EVERGREEN II

Height: 3'- 6'
Width: 8'
Post: 5" x 5"
Top Rail: 2" x 3.5"
Bottom Rail: 2" x 3.5" , with insert
Picket: 7/8" x 3" , 15 pcs
Picket caps: Dog Ear Cap
Matching Gate: Available
COLOUR available in select profiles only.
Contact your sales rep for more details



DIRECT FENCING SUPPLY



ELMS GATE

Height: 3'- 6"
Width: 8"
Post: 5" x 5"
Top Rail: 2" x 3.5"
Bottom Rail: 2" x 3.5", with insert
Picket: 7/8" x 3", 15 pcs, fixed on the outside of rail
Picket caps: Spade Cap
Matching Gate: Available
COLOUR available in select profiles only.
Contact your sales rep for more details



ELMS GATE II

Height: 3'- 6"
Width: 8"
Post: 5" x 5"
Top Rail: 2" x 3.5"
Bottom Rail: 2" x 3.5", with insert
Picket: 7/8" x 3", 15 pcs, fixed on the outside of rail
Picket caps: Spade Cap
Matching Gate: Available
COLOUR available in select profiles only.
Contact your sales rep for more details



OAKSIDE

Height: 3'- 6"
Width: 8"
Post: 5" x 5"
Top Rail: 2" x 3.5"
Bottom Rail: 2" x 3.5", with insert
Picket: 3" x 7/8", 15 pcs
Picket caps: Dog Ear Cap
Matching Gate: Available
COLOUR available in select profiles only.
Contact your sales rep for more details



OAKSIDE II

Height: 3'- 6"
Width: 8"
Post: 5" x 5"
Top Rail: 2" x 3.5"
Bottom Rail: 2" x 3.5" with insert
Picket: 7/8" x 3", 15 pcs, fixed on the outside of rail
Picket caps: Dog Ear Cap
Matching Gate: Available
COLOUR available in select profiles only.
Contact your sales rep for more details



BIRCHWOOD

Height: 3'- 6"
Width: 8"
Post: 5" x 5"
Top Rail: 2" x 3.5"
Bottom Rail: 2 x 3.5" with insert
Pickets: 1.5" x 1.5" 22 pcs
Picket cap: Sharp Picket Cap
Matching Gate: Available
COLOUR available in select profiles only.
Contact your sales rep for more details

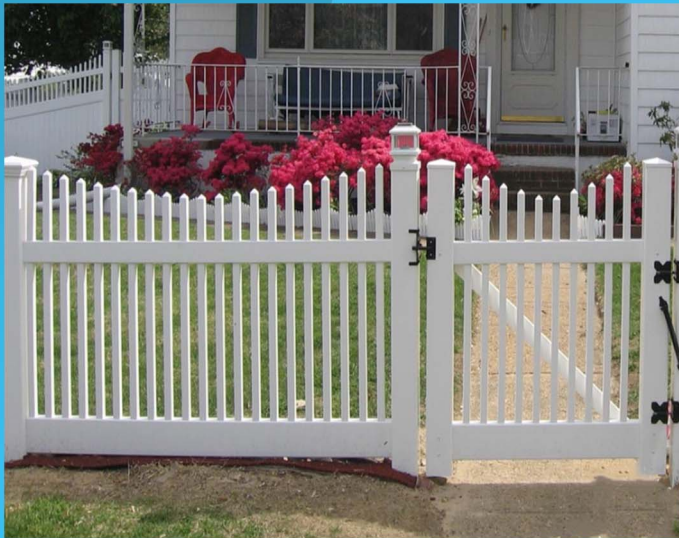


BIRCHWOOD II

Height: 3'- 6"
Width: 8"
Post: 5" x 5"
Top Rail: 2" x 3.5"
Bottom Rail: 2 x 3.5" with insert
Pickets: 1.5" x 1.5" 22 pcs
Picket cap: Sharp Picket Cap
Matching Gate: Available
COLOUR available in select profiles only.
Contact your sales rep for more details



DIRECT FENCING SUPPLY



BIRCHWOOD III

Height: 3'- 6'
Width: 8'
Post: 5" x 5"
Top Rail: 2" x 3.5"
Bottom Rail: 2" x 3.5" with insert
Pickets: 1.5" x 1.5" 22 pcs
Picket cap: Sharp Picket Cap
Matching Gate: Available
COLOUR available in select profiles only.
Contact your sales rep for more details

FERNDALE

Height: 3'- 8'
Width: 8'
Post: 5" x 5"
Top Rail: 2" x 3.5"
Middle Rail: 2" x 3.5"
Bottom Rail: 2" x 3.5" with insert
Picket: 1.5" x 1.5", 22 pcs
Picket Cap: Sharp Picket Cap
Matching Gate: Available
COLOUR available in select profiles only.
Contact your sales rep for more details





POOL FENCE



LAKE SIDE

Height: 3'- 6'
Width: 8'
Post: 5" x 5"
Top Rail: 2" x 3.5"
Bottom Rail: 2" x 3.5" with insert
Picket: 7/8" x 3", 15 pcs
Matching Gate: Available
COLOUR available in select profiles only.
Contact your sales rep for more details



DIRECT FENCING SUPPLY



CLEARBOOK

Height: 3'- 8'
 Width: 8'
 Post: 5" x 5"
 Top Rail: 2" x 3.5"
 Middle Rail: 2" x 3.5"
 Bottom Rail: 2" x 3.5" with insert
 Picket: 1.5" x 1.5", 22 pcs
 Matching Gate: Available
 COLOUR available in select profiles only.
 Contact your sales rep for more details



DRIFTWOOD

Height: 3'- 6'
 Width: 8'
 Post: 5" x 5"
 Top Rail: 2" x 3.5"
 Bottom Rail: 2" x 3.5" with insert
 Picket: 7/8" x 3", 9 pcs and 8 pcs of the other 6" picket
 Matching Gate: Available
 COLOUR available in select profiles only.
 Contact your sales rep for more details



CLEARVIEW

Height: 3'- 6'
 Width: 8'
 Post: 5" x 5"
 Top Rail: 2" x 3.5"
 Bottom Rail: 2" x 3.5" with insert
 Picket: 1.5" x 1.5", 22 pcs
 Matching Gate: Available
 COLOUR available in select profiles only.
 Contact your sales rep for more details



RANCH FENCE



EL DORADO III

Height: 52"
Width: 8'
Post: 5" x 5"
Rail: 1.5" x 5.5"
Matching Gate: Available
COLOUR available in select profiles only.
Contact your sales rep for more details



EL DORADO IV

Height: 64"
Width: 8'
Post: 5" x 5"
Rail: 1.5" x 5.5"
Matching Gate: Available
COLOUR available in select profiles only.
Contact your sales rep for more details



EL DORADO II

Height: 36"
Width: 8'
Post: 5" x 5"
Rail: 1.5" x 5.5"
Matching Gate: Available
COLOUR available in select profiles only.
Contact your sales rep for more details



SUNNYDALE

Height: 48"
Post: 5" x 5"
Rail: 1.5" x 5.5"
Rail Spacing: 3"
Cross Angle: 20 Degrees
Matching Gate: Available
COLOUR available in select profiles only.
Contact your sales rep for more details



DIRECT FENCING SUPPLY

WHY CHOOSE DFS?

NECESSARY ADDITIVES

We use essential additives needed to keep your fence looking beautiful. These include UV inhibitors, impact modifiers and non-chalking titanium dioxide(min.10 parts/100). These are "expensive" additives and not always used in more economical vinyl products. We use both mono-extruded and ASA co- extruded to offer the best fencing for our customers. All of our colours and woodgrain fencing use the ASA co-extruded vinyl to provide the best fade protection available. Our white profile are made using mono-extrusion. Our mission at Direct Fencing Supply is to offer our customer a fence they can be proud of for years to come



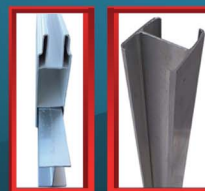
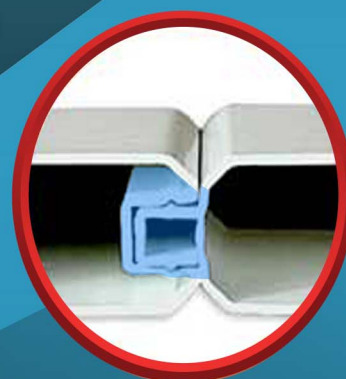
BIGGER COMPONENTS

DFS components are bigger and stronger than the competition. Our top and bottom rail are a true 2x6 on our most popular privacy fence. The pickets are also 7/8" thick loaded with internal ribs for strength. We supply 2 3/8" steel posts, as opposed to 1 7/8", for post and collar method installations.



INTERNAL REINFORCEMENTS

Our fences contain industry-leading reinforcements to ensure resistance to inevitable forces and impacts it will face. For added stability and strength, our Picket Lock System features a hook and lock connecting method, rather than standard tongue and groove. Internal ribs add strength and the bottom rails have an I-beam insert to prevent sagging. Aluminum gate I-beams are used inside of a PVC post to hang your gate.





DIRECT FENCING SUPPLY

TOP RAIL TIE (TRT)



WHAT DOES THE TOP RAIL TIE (TRT) DO?

- Replaces rail notching or keeper screws.
- Distributes undue stress from the top rail to the strongest part of the post.
- Eliminates post failures at the routed holes from incorrect stressing.



WHAT CAN THE TRT DO FOR YOU?

- When you install your fence the bottom rail will not come out because it is held secure between the pipe. The upper rail still needs to be secured and the TRT fixes this problem for you.
- The TRT eliminates the need for notching which takes time and makes for very difficult disassembly if ever required, especially in cool climates.
- Adds a professional finish to the top rail adjustments.

Our TRT allows you to install vinyl fence without causing undue stress on the post by securely fastening the top rail within a PVC post.



DIRECT FENCING SUPPLY

DFS POST LEVELLING COLLARS (PLC)



DFS post levelling collars are simply the best post-to-pipe pole levelling system on the market today. Our PLC allows you to install your steel posts without using concrete.



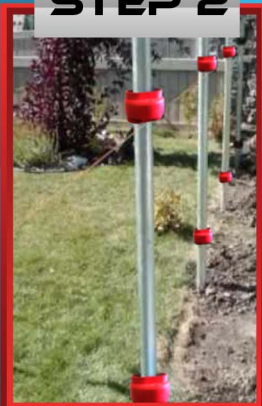
SOME FACTS

- Stronger one-piece design
- Maximum adjustability—slot extends to outer diameter
- Quicker and more accurate than two-piece design
- Flexible enough to fit over slightly “mushroomed” pipe
- Internal ridge keeps it from sliding during installation
- Easy to repair the fence and replace the posts since they are not concreted into the ground
- Cleaner—no left over dirt tailings after post installation. Save money on labour, concrete the expense to agar holes and remove the dirt tailings.
- Quicker install, no need to wait for concrete to set and hope your posts do not move as the concrete dries.

STEP 1



STEP 2



STEP 3



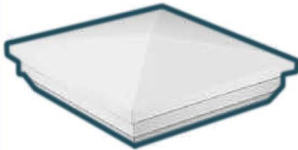
STEP 4



Your customers will be pleased with a clean, damage-free installation—without the need of a skid steer, auger or concrete mixer. You will save money on vinyl because the PVC post length stays above grade—a six-foot fence requires only a six-foot PVC post. Our post collars have been proven in some of the harshest climates and most difficult soil conditions in Canada.



ACCESSORIES



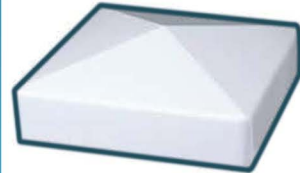
Available in 4" or 5" in White, Tan, Grey, Adobe or Dark Maple

NEW ENGLAND CAP



Available in 4" or 5" in White, Tan, Grey or Adobe

INTERNAL FLAT CAP



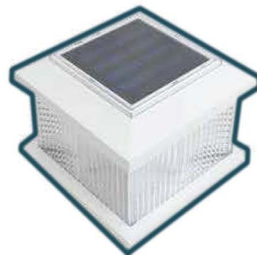
Available in 4"x5" in White, Tan, Grey, Adobe or Dark Maple

EXTERNAL FLAT CAP



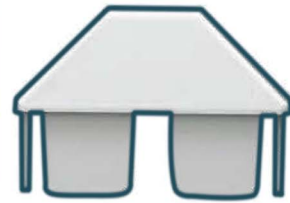
Available in 4" or 5" in White, Tan, Grey or Adobe

GOthic CAP



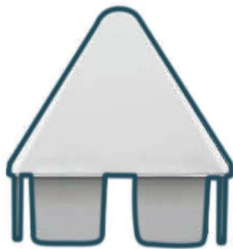
Only available in 5" in White

SOLAR CAP



7/8"x3" in White

DOG EAR PICKET CAP



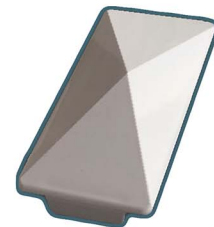
7/8"x3" in White

SPADE PICKET CAP



1.5" x 1.5" in White

SPIKE PICKET CAP

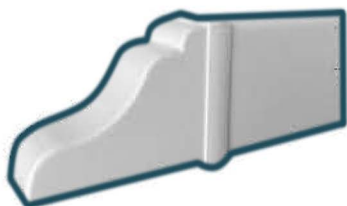


Available in 2.5"x4" in White, Tan, Grey, Adobe or Dark Maple

FLAT GATE CAP



ACCESSORIES



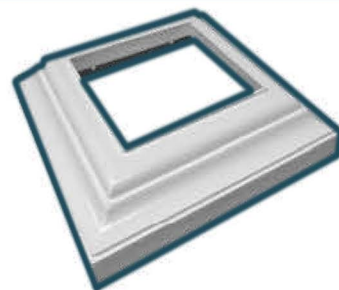
Available for 2" x 3.5" or
2" x 6" rail in White

ARBOR RAIL CAP



Available in 2" x 3.5" or 2" x 6"
in White

FLAT RAIL CAP



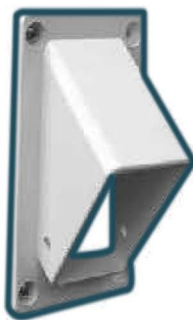
Available in 5" in White, Tan,
Grey or Adobe

2PCS BASE COVER



Available in 2" x 3.5" or 2" x 6"
in White

STRAIGHT RAIL MOUNT



Available in 2 x 3.5" in White

ANGLE RAIL MOUNT



Available in 4" in White

SIDE MOUNT SOLAR LIGHT



ACCESSORIES



**2.5\" X 4\"
GATE POST INSERT**



HD ALUMINUM INSERT



**96\"
GATE POST INSERT**



2\" X 6\" RAIL INSERT



**DFS
FLANGE GATE POST**



70\" I-BEAM WITH FLANGE



**DFS
QUICK CONNECT TEMPLATE BRACKET**



**DFS
TEMPLATE BRACKET**



ACCESSORIES



ARBOUR



PERGOLA



THE HARBOR GARDEN BOX



THE ESTATE GARDEN BOX
(TWO KITS SHOWN ABOVE)



DIRECT FENCING SUPPLY

DISTRIBUTOR FOR NATIONWIDE INDUSTRIES



NATIONWIDE
INDUSTRIES

CORNERSTONE 200



NATIONWIDE
INDUSTRIES

CORNERSTONE 300



NATIONWIDE
INDUSTRIES

ARMOR LATCH



NATIONWIDE
INDUSTRIES

GATE BRACE



NATIONWIDE
INDUSTRIES

KEYSTONE ADVANTAGE



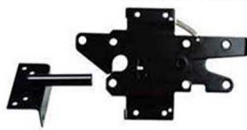
NATIONWIDE
INDUSTRIES

24" LOCKING DROP ROD



NATIONWIDE
INDUSTRIES

U HINGE 2.5"X4"



NATIONWIDE
INDUSTRIES

GATE LATCH



NATIONWIDE
INDUSTRIES

GATE HINGE



GATE HANDLE



NATIONWIDE
INDUSTRIES

POOL SAFETY LATCH



NATIONWIDE
INDUSTRIES

GATE WHEEL



NATIONWIDE
INDUSTRIES

SHOTGUN CLOSER



DIRECT FENCING SUPPLY

CHAIN-LINK FENCE



Colour: Galv., Black
Standard Sizes Available
Contact a sales representative
for more information.

PRIVACY SLATS

Height: 4', 5' & 6'
Colour Options: White, Taupe,
Green, Brown, Black



DIAMOND LOCK

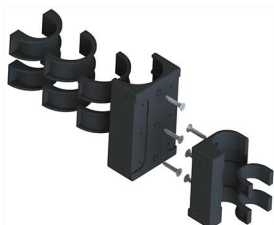
The Diamond Lock system is an industry leading technology for use in residential and commercial chain-link fencing. Height and colour options are available upon request. Please contact a sales representative for more information.



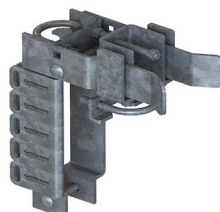
CHAIN-LINK ACCESSORIES



KEYSTONE LATCH



**KEYSTONE ROUND
POST ADAPTER**



GATE SHARE LATCH



TRIDENT 20" POOL LATCH



ALUMINUM POST CAP



**HEAVY -DUTY SELF
CLOSING GATE HINGE**



CANTILEVER ROLLER



**KEYSTONE PANICLATCH
ROUND POS**



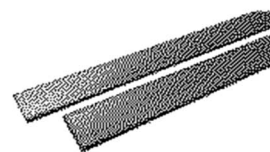
PANIC BAR KIT



**CORNERSTONE 200
ROUND POST**



TENSION BAND



TENSION BAR



**MECHANICAL TWO-SIDED
KEYPAD LEVER LOCK**



CANADA'S TRUSTED FENCE SUPPLIER

Round Pipe Sizes and Dimensions

SIZE Inches	Group	Gauge	THICKNESS Wall Size INCHES	Weight lbs/ft
1-5/8"	MG-40	12	0.111	1.84
1-7/8"	MG-40	11	0.12	2.28
2-3/8"	MG-40	10	0.13	3.12
2-7/8"	MG-40	9	0.16	4.64
3-1/2"	MG-40	8	0.16	5.71
4"	MG-40	8	0.16	6.56
1-3/8"	MG-20	14	0.08	1.06
1-5/8"	MG-20	14	0.08	1.43
1-7/8"	MG-20	13	0.09	1.74
2-3/8"	MG-20	13	0.095	2.32
2-7/8"	MG-20	12	0.1	3.25
1-3/8"	MG-15	15	0.072	0.96
1-5/8"	MG-15	15	0.072	1.22
1-7/8"	MG-15	15	0.072	1.41
2-3/8"	MG-15	15	0.072	1.77



Steel Tolerance:	According to ASTM F1083, ASTM A513 and ASTM A500
Tensile:	30,000 up to 70,000 psi HDG 10,000 up to 30,000 psi if pre-galvanized
Steel:	Thicknesses in accordance to ASTM A653
HDG:	1008, 1010 and ASTM A123
Pre-galvanized Thicknesses :	From 0.9 mm up to 2.55 mm
Durability:	1 micron per 1 year normal circumstances. ...per 1.5 years when in contact with sea water ...per 2 years when submerged in water ASTM B117 300 hours salt fog test ASTM D1499 500 hours weather test ASTM D2247 500 hours humidity test
Bundling:	Hex bundling
Coating:	As per ASTM F1043 Group IV
Length:	Standard lengths available. Please speak with a sales representative for more information.



POST DRIVER



The DFS Post Pounder uses a 2 stroke 52CC gasoline engine that has the power you need to drive your pipe into the ground. Built for durability and power, this versatile post pounder will not only handle the galvanized steel pipe for vinyl fence but it also accommodates other sizes of posts and pipe. The sleeve adaptors that are included are 2", 2.75" and 4".

The DFS Post Pounder will save you time and the back-breaking effort needed to pound your pipe in by hand. Put it to the test and you will see it's uncompromising quality and effortless post pounding. Your post pounder also comes with a fuel mixing can, tool kit, grease and a rugged carrying case making portability even easier.

Save time and money with your DFS Post Pounder.





DIRECT FENCING SUPPLY
CANADA'S TRUSTED FENCE SUPPLIER

TOLL FREE: 1-888-751-5324

PHONE: 306-242-7938

FAX: 306-668-1055

**7385 LUTHERAN ROAD
COMP 20, SITE 411, RR#4
SASKATOON, SK S7K 3J7**

INFO@DIRECTFENCINGSUPPLY.CA

WWW.DIRECTFENCINGSUPPLY.CA

directfencingsupply.ca